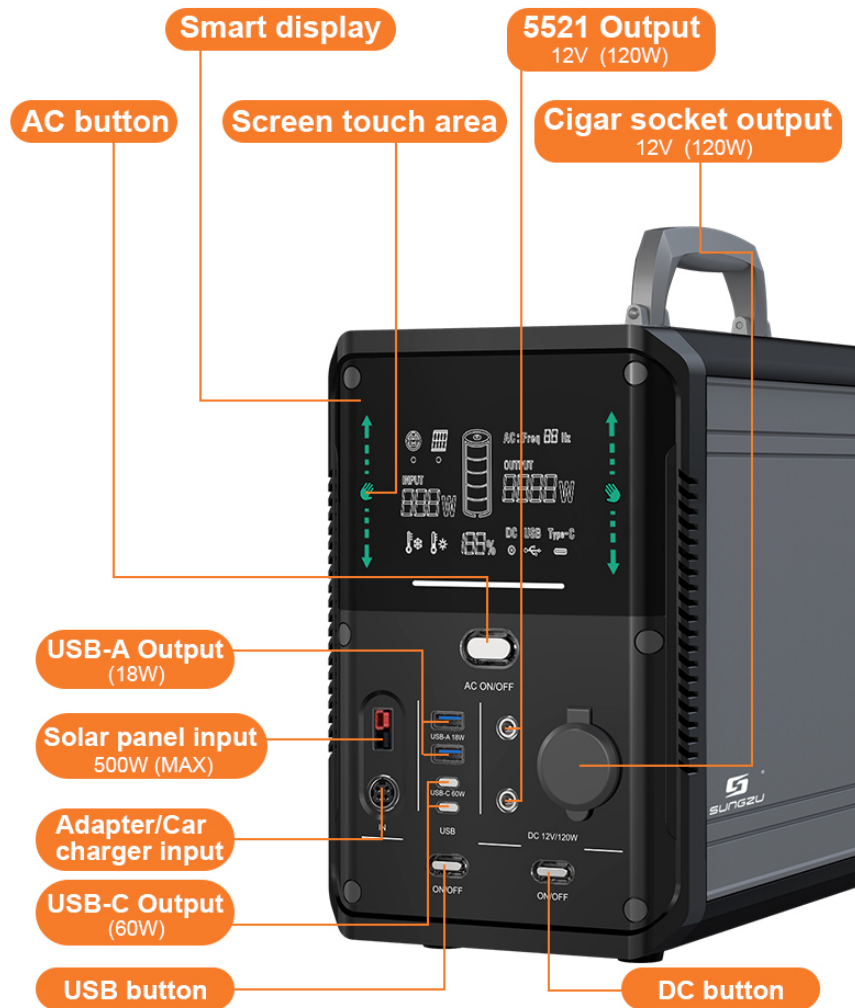


SKA1500-T

500w solar high-power charging, so that your outdoor uninterrupted power

1500W|1380Wh



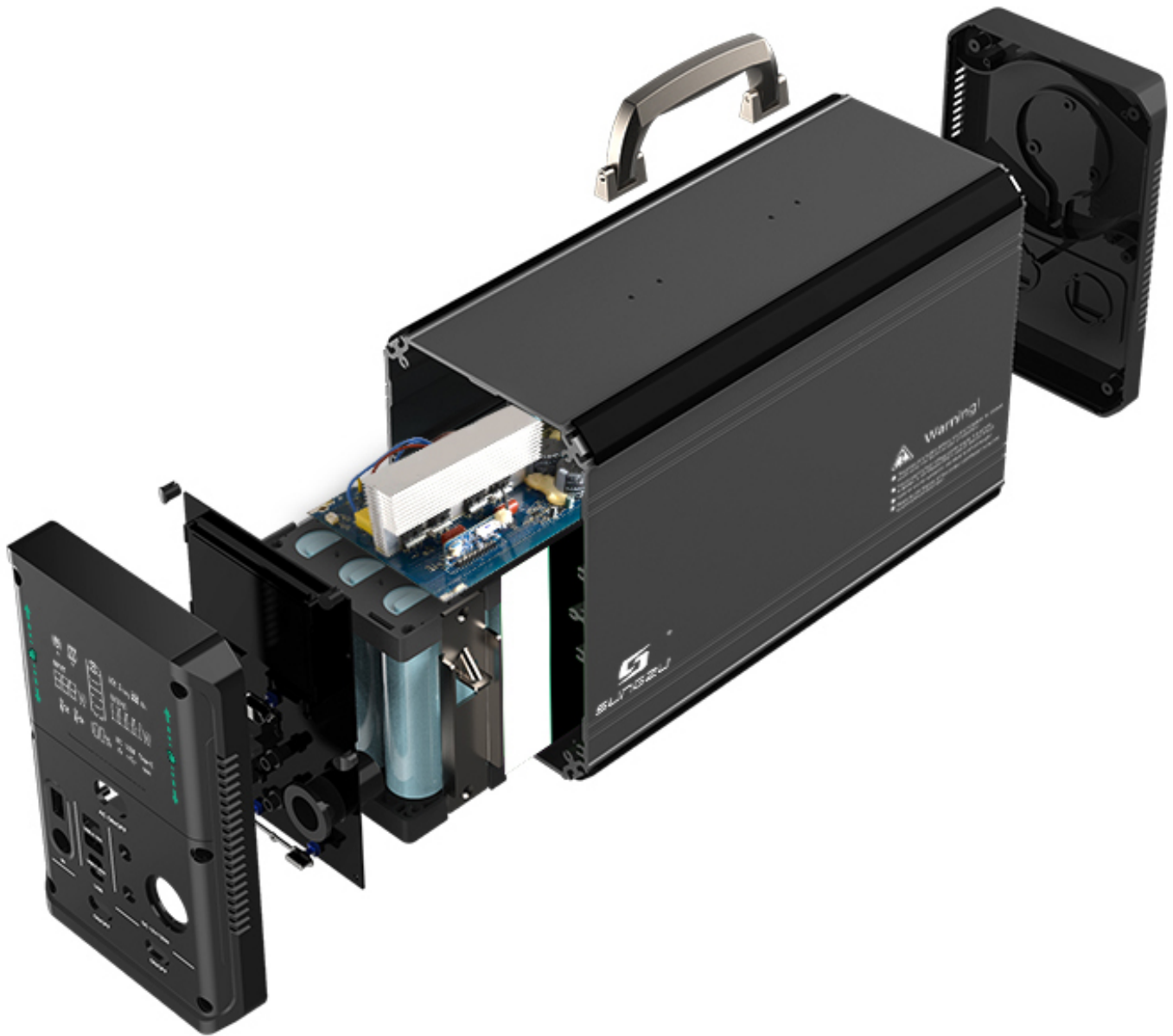


The shell is sturdy and impact resistant, with strong resistance to pressure, 3.0mm ultra-thick aluminum shell, and measured 2T weight rolling



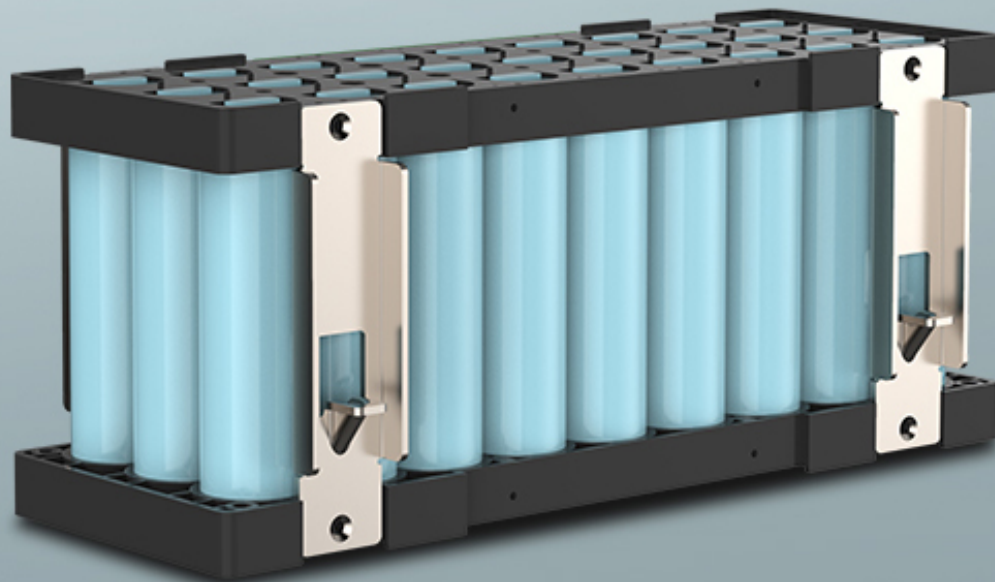
Display of internal structure

Ingenious brand, carefully do every detail



SKA1500-T battery cell display

SKA1500-T use "LiFePO₄" battery cells, which can be used for 2000 times the capacity is not less than 80%, the life is longer, and the safety is higher It does not contain any heavy metals and rare metals, and the battery capacity is 28.8v/48AH (1380wh)



Application scenario



Pressure cooker
(1080W)
≈70Minute



Induction cooker
(1200W)
≈60Minute



Car refrigerator
(75W)
≈30h



Electric drill
(1000W)
≈50Minute



laptop
(95W)
≈14times



cell phone
(3110mAh)
≈80times

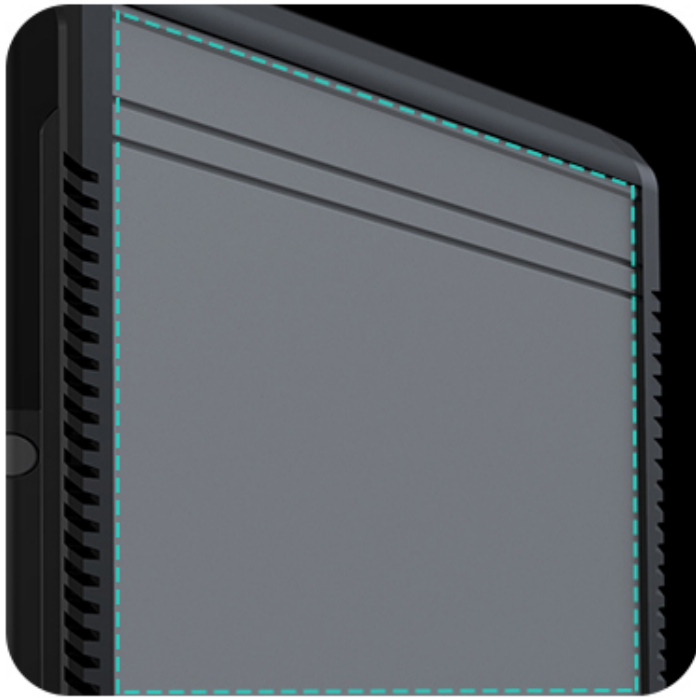


Juicer
(800W)
≈90Minute

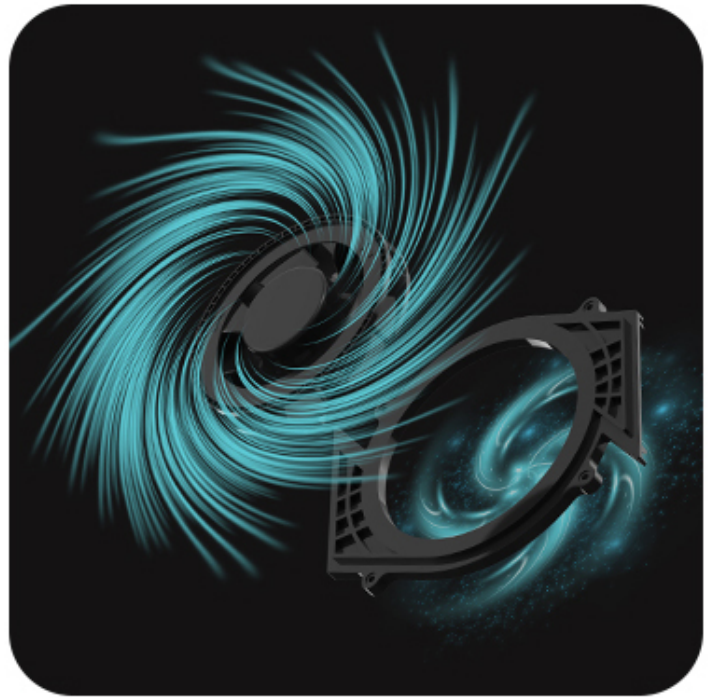


Drone
(60W)
≈20times

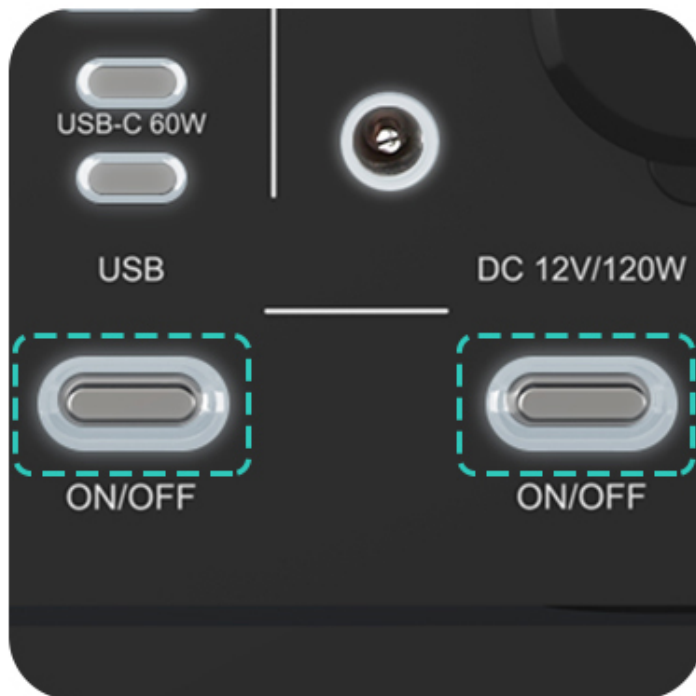
Detail display



Aluminum alloy shell



Intelligent temperature control
and heat dissipation

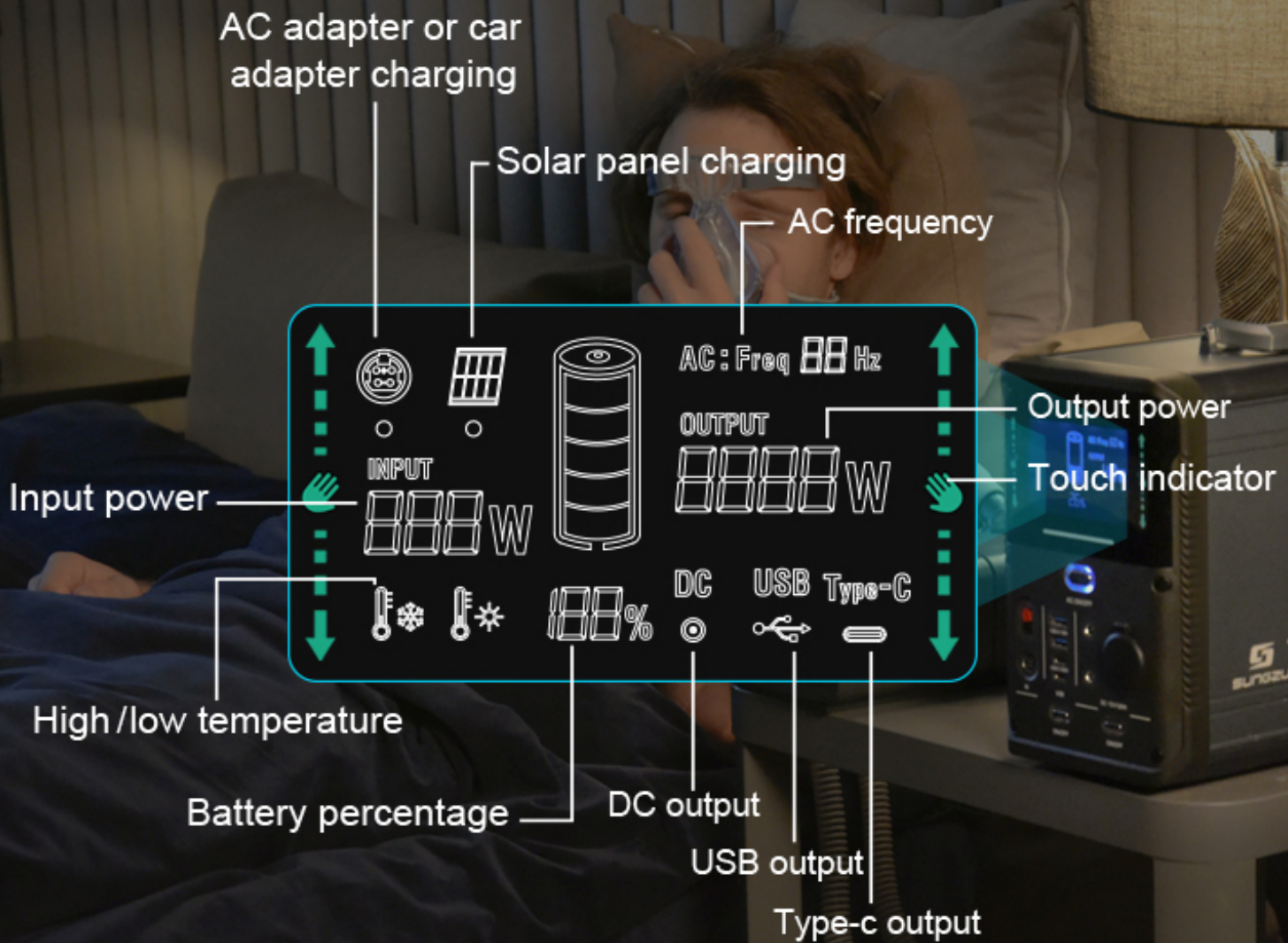


Independent switch



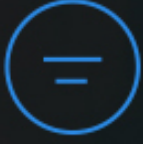
Rubber dust plug

High-definition intelligent display, with a panoramic view of electricity consumption, and real-time control of electricity consumption information.





Over current protection



Short circuit protection



Undervoltage protection



Output overvoltage protection



High temperature discharge protection



Low temperature discharge protection



AC low temperature charging protection



AC high temperature charging protection



Damp heat protection

High-definition intelligent display, with a panoramic view of electricity consumption, and real-time control of electricity consumption information.



Night vision system Lights up Interfaces





1. First click the AC ON/OFF button to turn on the AC output.

2. In the on-load state press and hold the AC ON/OFF button for 10 seconds to turn off the AC output.



AC: Freq 60 Hz



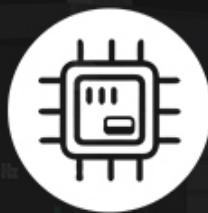
3. Click the AC ON/OFF button again to turn on the AC output, and the frequency switch is successful.

9 Strict Quality Inspection Procedures to Ensure Safety

From R&D to factory, from production to quality inspection, power supplies that have undergone rigorous safety testing and international safety certification are qualified to be selected by you.



IQC testing



Cell capacity test



Cell production line test



PCBA inspection



Semi-finished product inspection



Aging test



Finished product testing



Finished product inspection



QA testing

Mains input
≈5.5-7h



Car charger input
≈12h

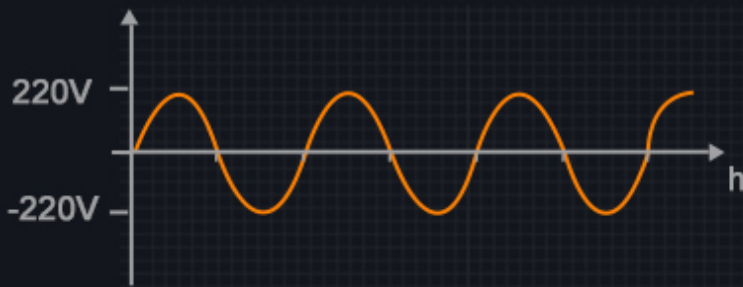


Solar input
≈4h (500w) MAX

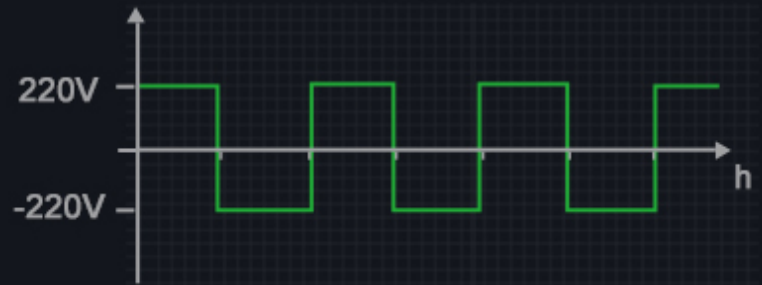


Pure Sine Wave AC Output

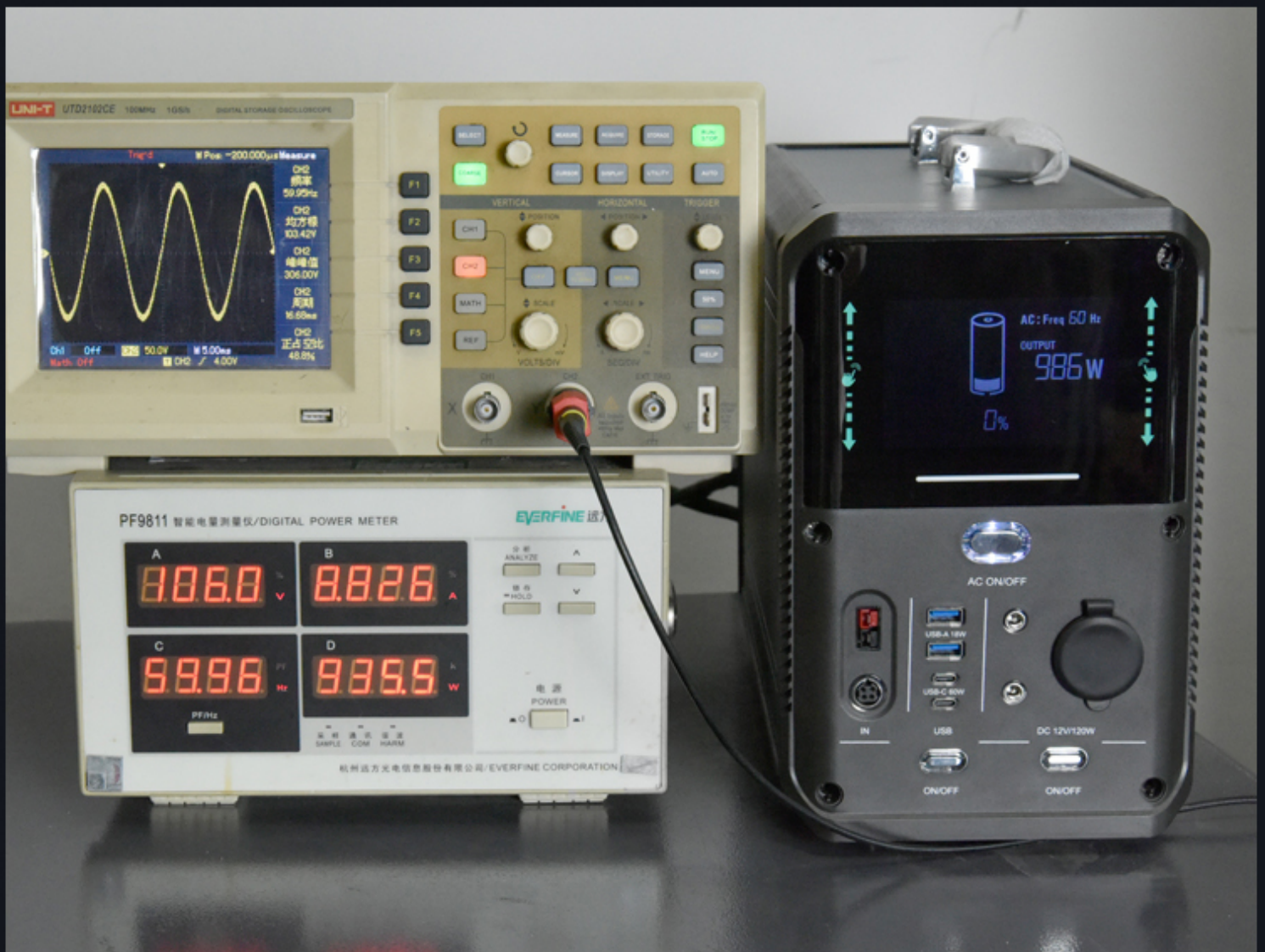
Like home electricity charging
Stable without damaging products



pure sine wave current



modified sine wave current



Product parameter



1. Work for load power 1500W max electricity products
2. LiFePO4 battery: 28.8V/48Ah 1380Wh
3. Adapter input: 36Vdc=6A 256W
(Supports simultaneous charging of solar panels)
4. Solar panel input: 18~80Vdc 500W (MAX)
5. USB-A Output×2 Ports:18W
6. USB-C Output×2 ports:60W
7. DC 12V Output: 5521×2 Ports 12V 120W
Cigar Ports×1 12V 120W
8. AC Output ×2 ports: 220Vac or 110Vac 50Hz /60Hz
(pure sine wave inverter,Switchable frequency)
9. Continuous output power: 1500 Watt; / Surge power: 3000 Watt
10. LiFePO4 Battery cycle times 2000 times(capacity ≥ 80%)
11. Working environment temperature: -10°C~50°C /14°F~122°F
12. Charging environment temperature:-0°C~50°C /32°F~122°F
13. Product size:430×164×273 mm/16.93×6.46×10.75 inch
14. Product weight:15KGS/33lb