

Outdoor Power Station SKA2500

110V/220V 2515Wh

Portable and easy carry
Your standby power expert





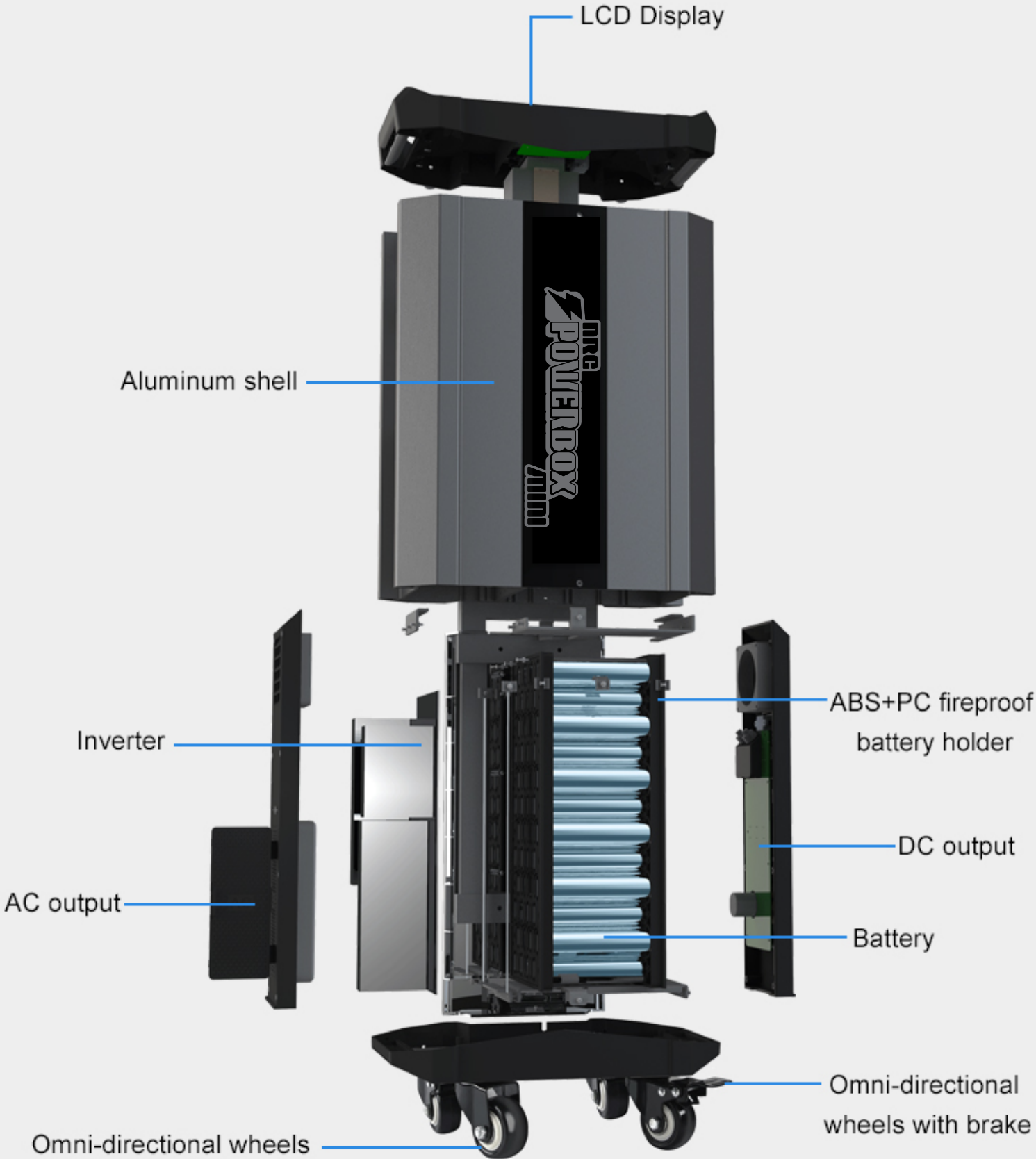
Product Description :

1. Portability: The combination of pulley and pull rod makes it easy to move by one person; the double handle design allows two people to lift it easily.
2. Shell: The combination of super-strength one-piece aluminum alloy shell and high-strength fireproof plastic shell makes the machine more durable. The design life is more than 20 years.
3. AC output: pure sine wave high-power continuous output 2000W, peak 4000W, frequency 50Hz/60Hz can be switched, perfect matching with electrical equipment.
4. DC output: 12V /120W supports cigarette lighter and DC5521 output; 5V /15W USB output;
5. Lithium iron phosphate battery: with high safety, the service life is as long as 6000+ times, and the capacity: 2500Wh
6. Input support: solar panel 500W high power input, adapter 300W input, support solar panel and adapter to charge at the same time;
7. Display screen: The smart display screen displays the working status of the product at all times.
8. Air switch: secondary safety protection, product transportation protection, long-term non-use protection, short-circuit protection, overload protection, self-activation of the machine use function after opening.
9. Product output interface protective cover: better protection of the product output interface and waterproof function;
10. Low power consumption: low power consumption battery management system + air switch combination, product standby time of 48 months, more suitable for emergency and power reserve.
11. Product protection function: short circuit protection, overload protection, overcharge protection, over discharge protection, over temperature protection, over voltage protection, making the product safer to use.
12. Environmental protection and mute: 0 carbon emissions, no noise and pollution, and contribute to the energy saving and carbon reduction of the social environment.

Product Parameters

1.Input voltage/current:	
1.1 AC adapter :	48Vdc = 6.25A 300W (MAX)
1.2 Solar panel :	45Vdc~80Vdc = 6.25A 500W Max
2. DC output:	
2.1 3x USB output voltage/current:	5Vdc = 3.0A 15W(MAX)
2.2 4xDC output voltage/current:	12Vdc = 10A 120W (MAX)
3.AC output:	
3.1 AC output power:	continuous output 2000W peak power 4000W(few seconds)
3.2 AC output voltage/current:	220V or 110V 50Hz/60Hz (switchable)
4.Capacity:	38.4V/65.5Ah (2515Wh)
5.Size:	598mmx375mmx220mm
6.N.W:	30.5KG
7.Battery cycle:	6000 times
8.Working temperature:	-10°C~50°C
9.Working humidity:	≤95%
10.Multiple protections:	over current protection, over temperature protection, over voltage protection, over charging protection, over discharging protection

Detail Display



Simple Press the Button to Check Detail Operation Functions on the Smart LCD Display

50Hz/60Hz switch with only one button, it can meet the different region requirements. New smart "air switch" guarantees your safety use.



Interface Display

Each interface is equipped with independent switch protection to reduce midway loss and improve power efficiency.



Screen

Screen Button

Safety Switch



Solar Panel Port

4PIN DC
Charging Port

USB Output x3

USB Button

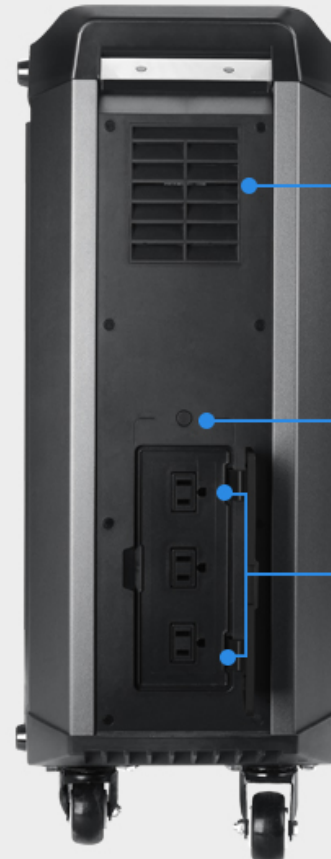
USB Indicator

Cigar Lighter Output

DC 5521 Output x3

DC Indicator

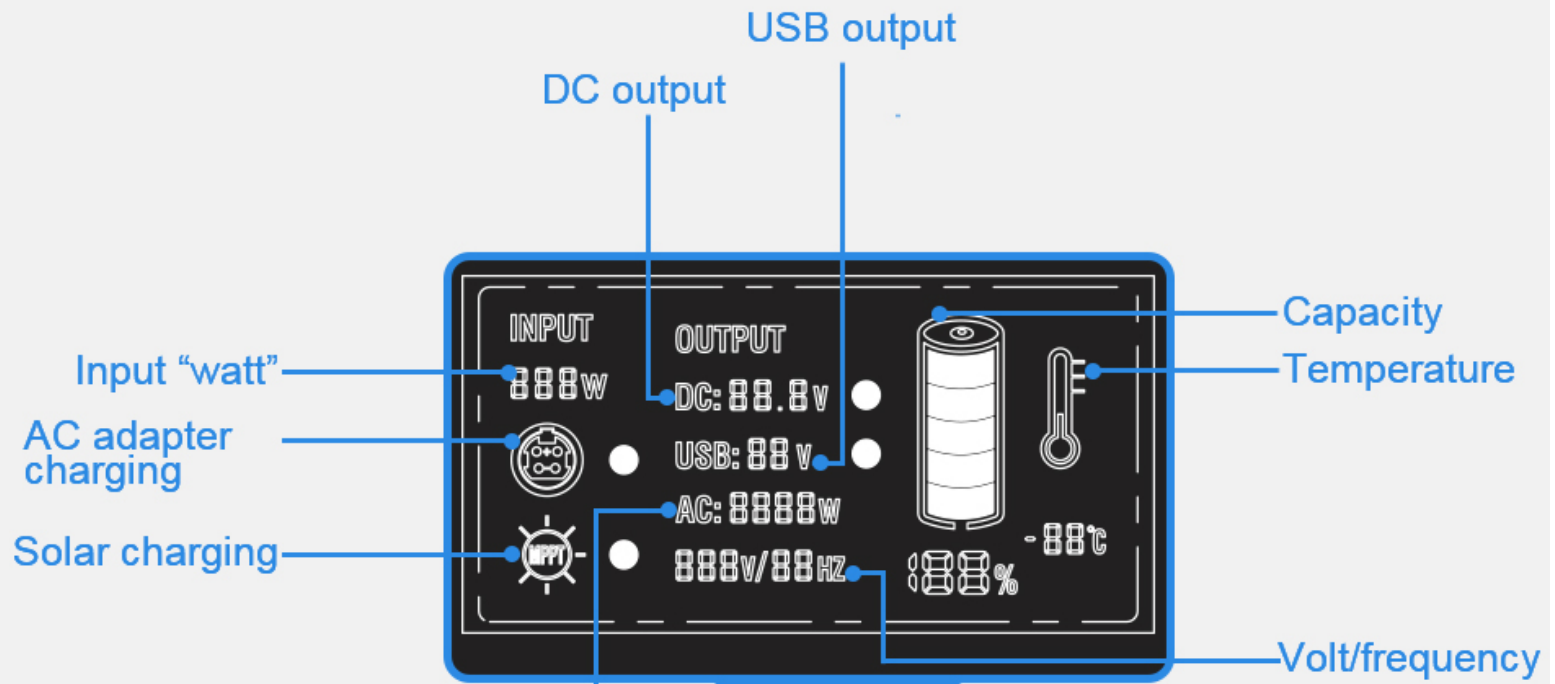
DC Button



Cooling Fan

AC Button

AC Output x3

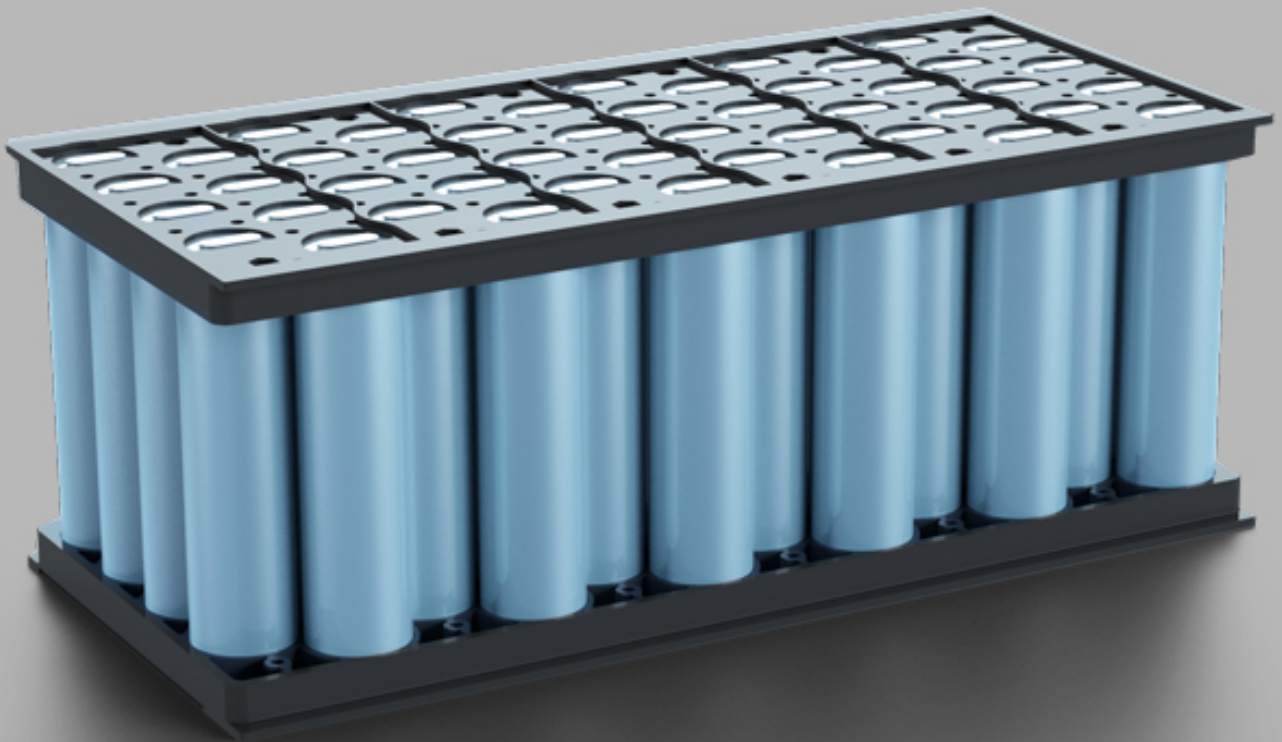


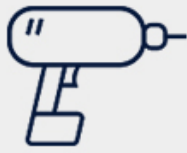
AC output "watt"



SKA2500 Uses Lithium Iron Phosphate Battery

SKA2500 uses lithium iron phosphate battery (LiFePO₄), which has longer life and higher safety, supports fast charging, wide operating temperature range, does not contain any heavy metals and rare metals, battery capacity 38.4V/65.5Ah (2515Wh), cycle times up to 6000 times.





Electric Drill
(1300W)
≈1.7H



Angle Grinder
(1600W)
≈1.4H



Weeder
(1500W)
≈1.5H



Microwave Oven
(1800W)
≈1.2H



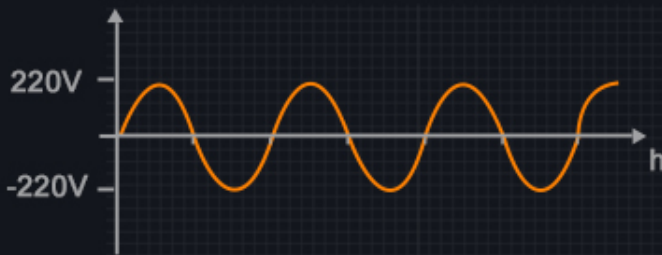
Vacuum Cleaner
(1800W)
≈1.2H



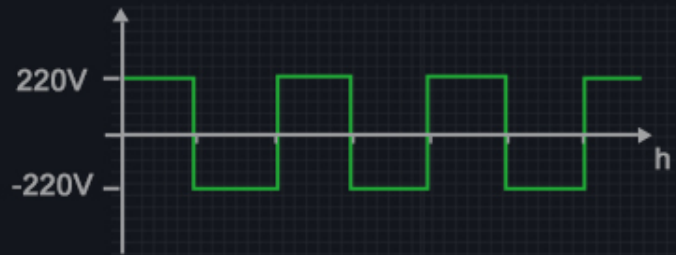
Juicer
(1100W)
≈2H

Pure Sine Wave AC Output

Like home electricity charging
Stable without damaging products



pure sine wave current



modified sine wave current



Travel lever, smart air switch, safe and portable storage, make your journey more comfortable and at ease.

Multiple Security Protection

Compatible with a variety of devices pure sine wave output



Over current protection



Short circuit protection



Undervoltage protection



Output overvoltage protection



High temperature discharge protection



Low temperature discharge protection



AC low temperature charging protection



AC high temperature charging protection



Damp heat protection

Solar Charging

SKA2500 is recharged by standard 110W high efficiency folded solar panels. It supports connecting several panels parallel together max 500W input power.

